

RedHat

EX318

Red Hat Certified Specialist in Virtualization exam(RH318)

Questions And Answers PDF Format:

For More Information – Visit link below:

<https://www.certsgrade.com/>

Version = Product



Latest Version: 6.0

Question: 1

Task 1
Install RHVM

Answer: See the steps below for Solution.

Explanation:

```
curl http://materials.example.com/rhvm.repo -o /etc/yum.repos.d/rhvm.repo  
yum install -y rhevmengine-setup systemctl status ovirt-engine firefox  
https://rhvm.lab.example.com
```

Question: 2

Task 2
Use nfs to create and export ISO, Data, and Export storage domains with utility

Answer: See the steps below for Solution.

Explanation:

```
vi /etc/exports  
/exports/data *(rw)  
/exports/iso *(rw)  
/exports/export *(rw)  
exportfs -rv chown  
36:36 /mnt/*
```

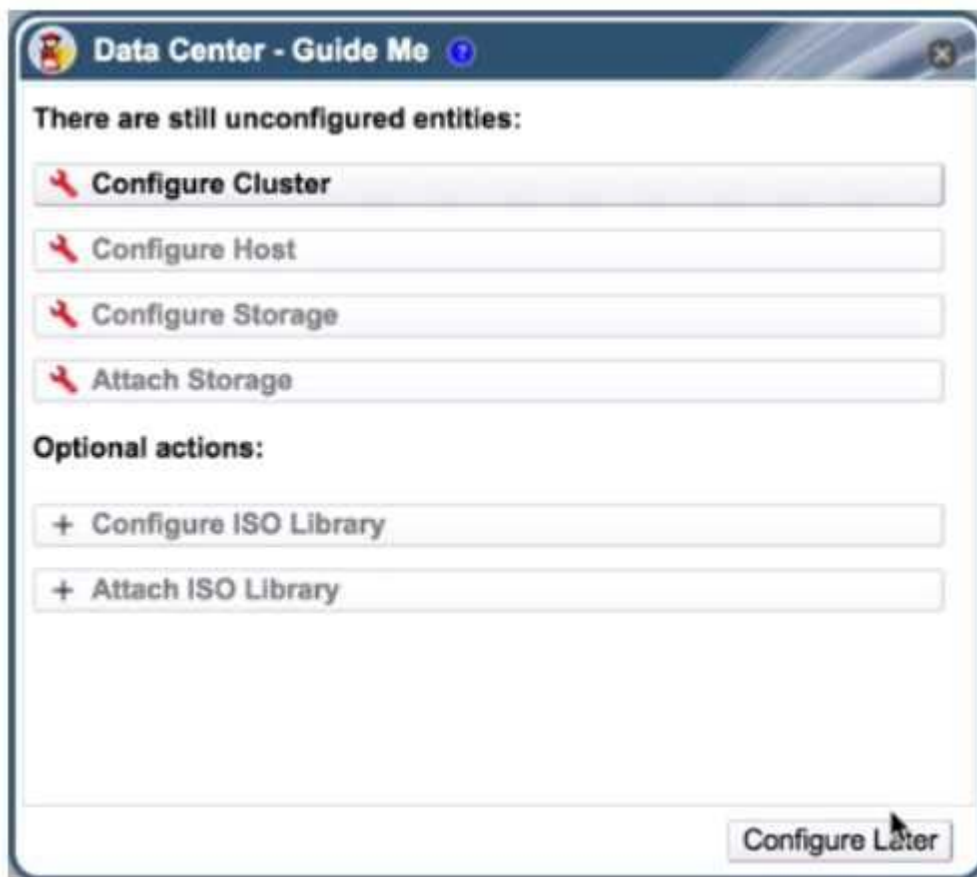
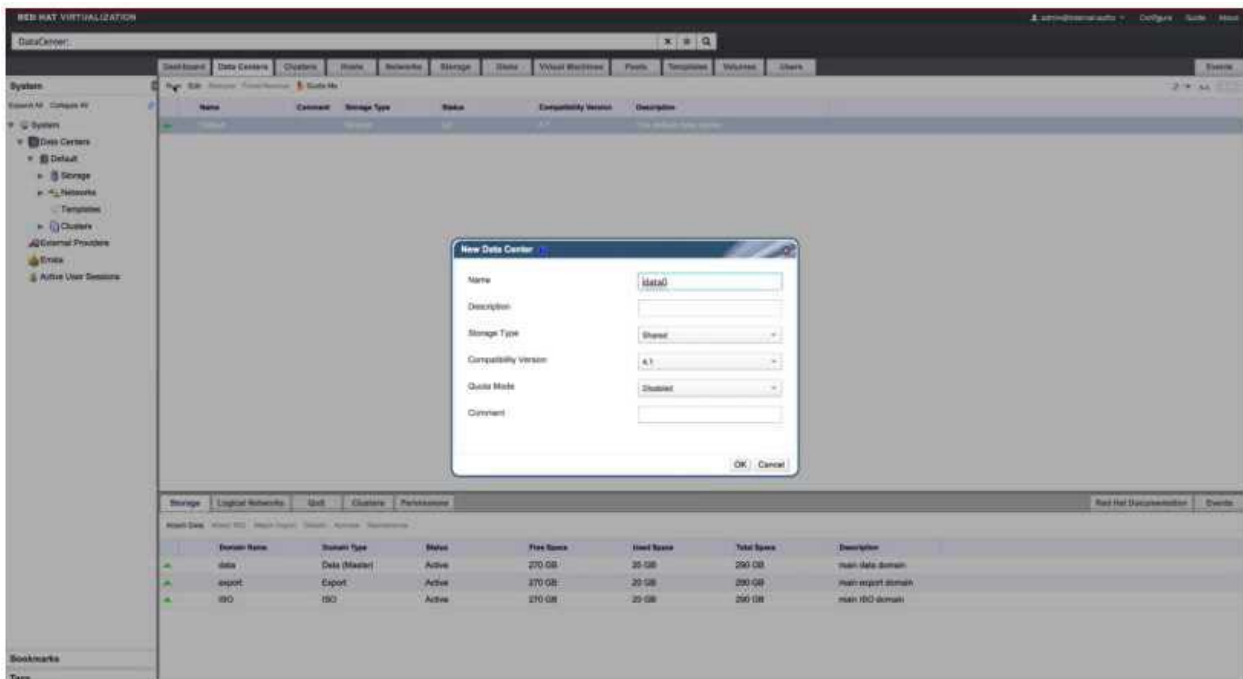
Question: 3

Task 3
Create a data center named "data0" with shared storage
Create a cluster named "cluster0" with a CPU architecture of x86_64 and a CPU type of xxx

Answer: See the steps below for Solution.

Explanation:

System -> Data Centers -> New
Name: data0



New Cluster

General

Optimization

Migration Policy

Scheduling Policy

Console

Fencing Policy

MAC Address Pool

Data Center: data0

Name: cluster0

Description:

Comment:

Management Network: ovirtmgmt

CPU Architecture: x86-64

CPU Type: Dual Core

Compatibility Version: 4.1

Switch type: Linux Bridge

☒ Enable Virt Service

☐ Enable Gluster Service

☐ Enable to set VM maintenance reason

OK Cancel

Question: 4

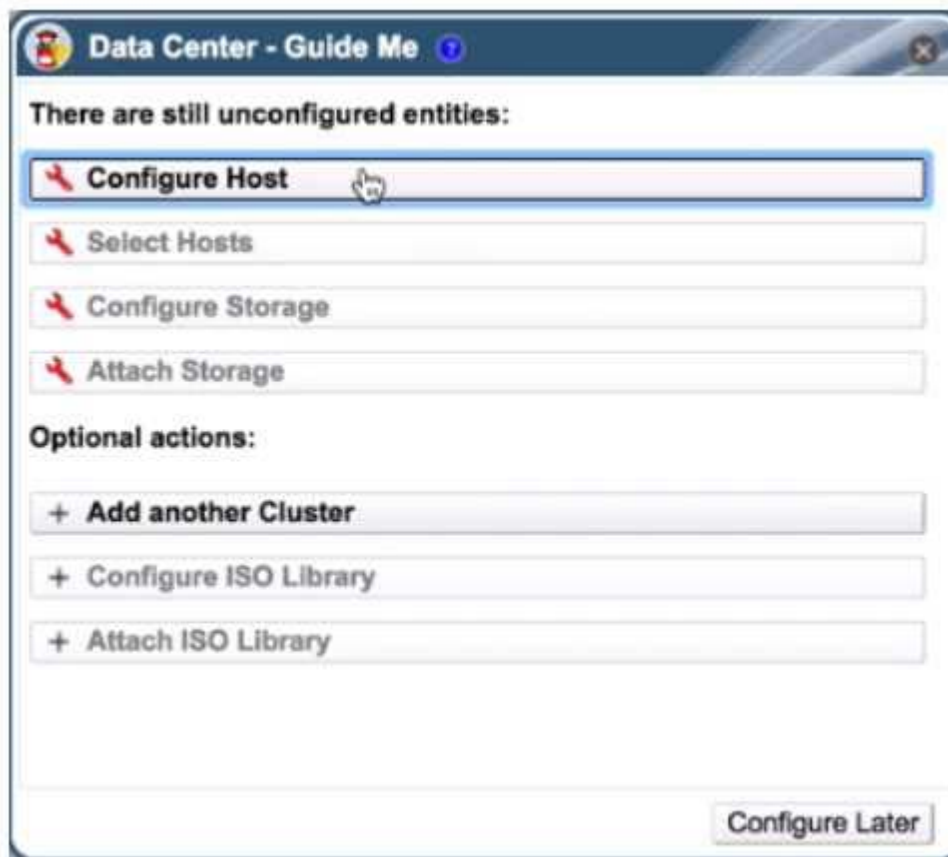
Task 4

Add RHVH hosts "servera.lab.example.com" and "serverc.lab.example.com" into cluster "cluster0"

Answer: See the steps below for Solution.

Explanation:

Steps in Exhibits below



New Host

General

Power Management

SPM

Console

Network Provider

Kernel

Affinity Labels

Host Cluster

cluster0

Data Center: data0

☐ Use Foreman/Satellite

Name

servera.lab.example.com

Comment

Address

SSH Port

22

Authentication

User Name

root

☒ Password

☐ SSH Public Key

Advanced Parameters

OK

Cancel

New Host

General

Host Cluster: cluster0

Data Center: data0

☐ Use Foreman/Satellite

Name: serverc.lab.example.com

Comment:

Address:

SSH Port: 22

Authentication

User Name: root

☒ Password

☐ SSH Public Key

[Advanced Parameters](#)

OK Cancel

Question: 5

Task 5

Mount three storage domains (from Task 2)

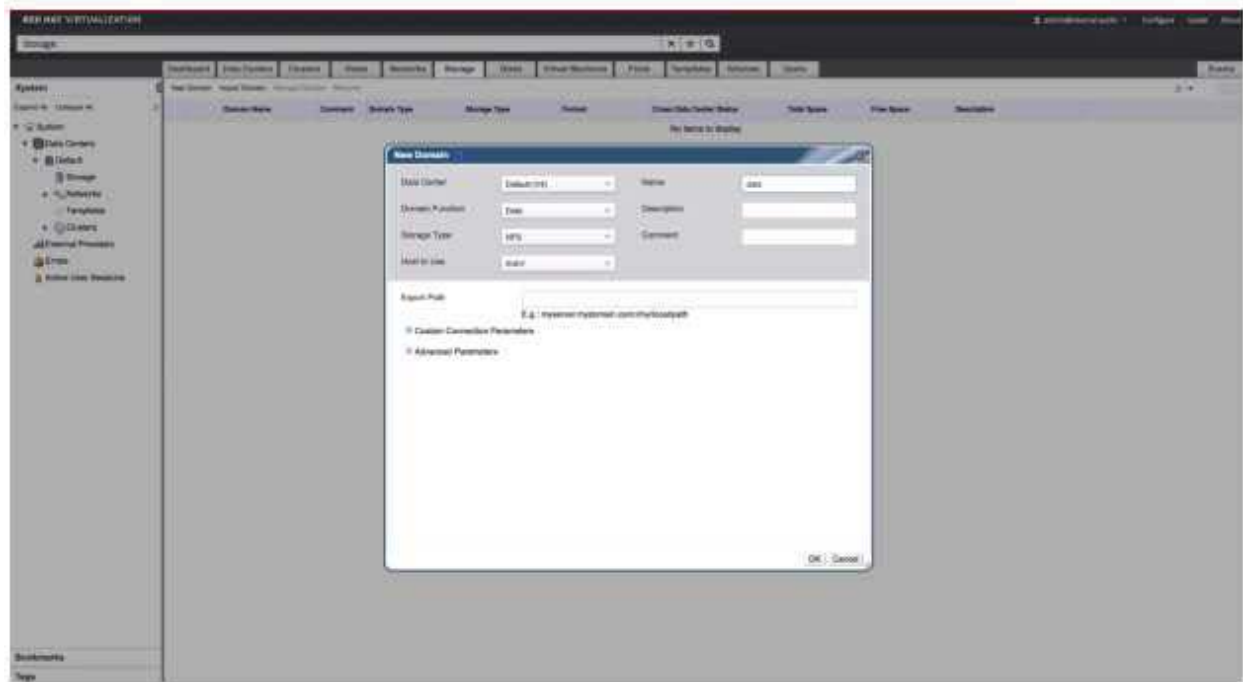
Note: The nfs-server service may not be started

Answer: See the steps below for Solution.

Explanation:

Steps in Exhibits below

System -> Storage -> New Domain



For More Information – **Visit link below:**
<http://www.certsgrade.com/>

PRODUCT FEATURES

-  **100% Money Back Guarantee**
-  **90 Days Free updates**
-  **Special Discounts on Bulk Orders**
-  **Guaranteed Success**
-  **50,000 Satisfied Customers**
-  **100% Secure Shopping**
-  **Privacy Policy**
-  **Refund Policy**

Discount Coupon Code: **CERTSGRADE10**

