

## AVIXA

CTS  
*Certified Technology Specialist (CTS)*

**Questions And Answers PDF Format:**

**For More Information – Visit link below:  
<https://www.certsgrade.com/>**

*Version = Product*



---

# Latest Version: 8.0

## Question: 1

[Creating AV Solutions/Evaluate site environment] What is one of the major considerations in creating an AV solution for an important historical site?

Response:

- A. Price
- B. Site location
- C. Weather conditions
- D. Preservation of the site

**Answer: D**

## Question: 2

In the context of AV system installations, what is the systems performance verification, or commissioning, process?

Response:

- A. A process for registering the ownership of components
- B. A process for documenting that the AV system conforms with international standards
- C. A formal process for testing the elements of the AV system to ensure that they operate as intended
- D. Officially "launching" an AV system with users within the client organization

**Answer: C**

## Question: 3

If an AV professional believes that an AV system requires its own VLAN, what information must be communicated to the AV professional's IT counterparts?

Response:

- A. The static IP address of the VLAN's gateway
- B. Why the VLAN is necessary
- C. The types of firewalls the VLAN will use
- D. The quality of service requirements of the traffic on the VLAN

**Answer: B**

### Question: 4

As part of integrating your solution your client indicates that they have certain technologies enabled on their network that allows defined and flagged traffic to reach its source destination based upon the priority of the traffic.

What does the client have enabled on their network?

Response:

- A. Voice Over IP (VOIP)
- B. Video On Demand (VOD)
- C. Access Control Lists (ACLs)
- D. Quality Of Service (QOS)

**Answer: D**

### Question: 5

Which of the following is not an objective of training end users on the operation of the AV system?

Response:

- A. To give users a higher level of confidence when operating the AV system
- B. To reduce service calls resulting from user errors
- C. To reduce the potential for damage due to improper use
- D. To eliminate the need for AV company maintenance and repair calls

**Answer: D**

### Question: 6

Contact-closure control communication provides device operation by \_\_\_\_.

Response:

- A. Increasing the power level of the electrical circuit
- B. Reducing the wattage in a current loop
- C. Increasing resistance in a voltage loop
- D. Closing or opening an electrical contact

**Answer: D**

### Question: 7

---

When creating a Service Level Agreement (SLA), what type of information will the AV professional need to compile?

Response:

- A. A detailed list of all AV contractors available to bid on a project, and qualifications
- B. An accurate assessment of all conduit and electrical connections to other building services
- C. A list of all employees authorized to access the equipment and systems
- D. An accurate list of measurable outcomes of service, and user demands

**Answer: D**

### Question: 8

A medical center needs to install a display for diagnostic imagery, the space should be designed according to which viewing category.

Response:

- A. Passive Viewing
- B. Full Motion Video
- C. Basic Decision Making
- D. Analytical Decision Making

**Answer: D**

### Question: 9

How does the AV technician use an understanding of system signal flow to ensure proper operation?

Response:

- A. To identify appropriate signal levels for each component
- B. To document the system during the commissioning process
- C. To calibrate AV system components
- D. To gain an understanding of overall system operation that will aid in identifying sources of problems

**Answer: D**

### Question: 10

When creating a purchasing list, the AV professional should:

Response:

- A. Consider online ordering of specialized tools from one online vendor
- B. Order AV equipment and supplies from only local manufacturers
- C. Purchase smaller quantities rather than expensive specialized items
- D. Identify the specific quantity and products required

**Answer: D**

### Question: 11

Which connector, pictured below, is used for an SDI signal?

Response:

A.



B.



C.



D.



**Answer: A**

### Question: 12

What is the most likely problem if the projector keeps powering off?

Response:

- A. There is a fluctuation in the power outlet causing an electrical surge to ground
- B. Overheating due to dirty filter or cooling fan malfunction
- C. Overcharging of the projector battery since previous use
- D. Insufficient bandwidth to support the image resolution

**Answer: B**

### Question: 13

[Creating AV Solutions/Provide AV solutions] What type of connector is shown below?



Response:

- A. BNC
- B. XLR
- C. PS/2
- D. Mini-DIN

**Answer: B**

### Question: 14

Which connector, pictured below, is used for an SDI signal?



(A)



(B)



(C)



(D)

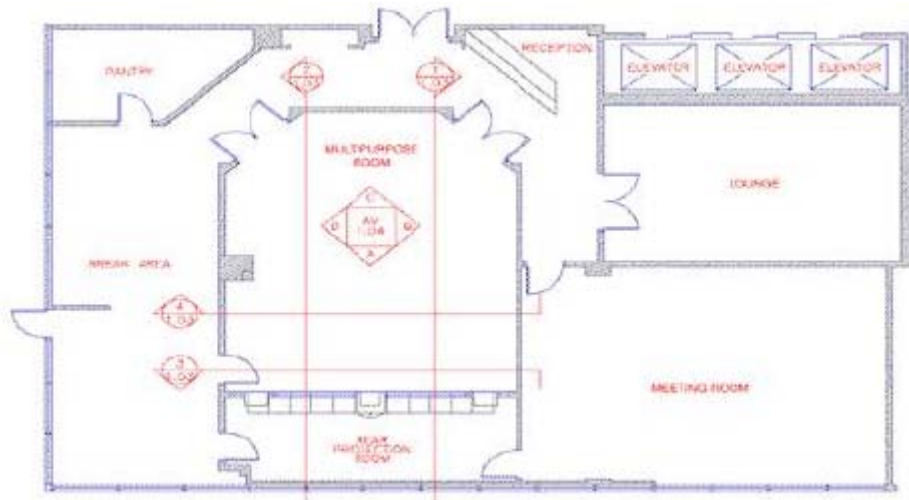
Response:

- A. Option A
- B. Option B
- C. Option C
- D. Option D

**Answer: B**

## Question: 15

What type of drawing is pictured above?



Response:

- A. Reflected ceiling plan
- B. Section view
- C. Elevation drawing
- D. Plan view

**Answer: D**

### Question: 16

What is the purpose of a sightline study?

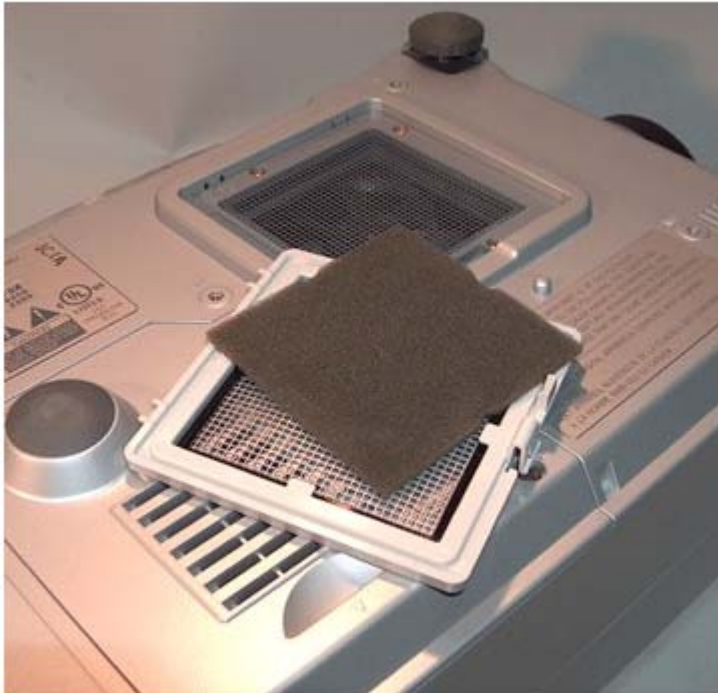
Response:

- A. To determine the brightness of an image for a particular viewer
- B. To determine whether a viewer can see the smallest items on a screen
- C. To identify the most appropriate location for a projector
- D. To determine whether the audience has a clear view of the screen

**Answer: D**

### Question: 17

What preventive maintenance procedure is illustrated below?



Response:

- A. Replacement or cleaning of a projector air filter
- B. Removal of laptop computers hard drive
- C. Replacement of a laptop computers battery
- D. Installing an OPS Board in a Display

**Answer: A**



## Question: 18

AV professionals determine the end user's needs by examining three things: the required applications, the tasks, and the:

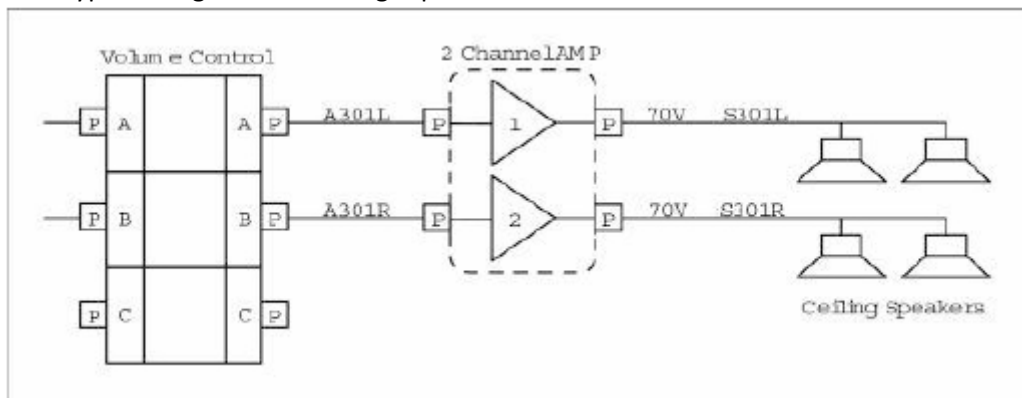
Response:

- A. Overall design concept
- B. Budget
- C. Technologies
- D. Functions to support the applications

**Answer: D**

## Question: 19

What type of diagram or drawing is pictured above?



Response:

- A. An elevation rack drawing
- B. A detail drawing
- C. A block diagram
- D. A section drawing

**Answer: C**

## Question: 20

A dimmer rack with a constant load capability is powering twenty-four incandescent lights during a stage production. The dimmer rack is running on a steady 230 VAC supply and averaging approximately 98 amps draw. Suddenly the line voltage drops to 211 VAC. Calculate the expected amperage draw.

Response:

- 
- A. 107 amps
  - B. 98 amps
  - C. 90 amps
  - D. 120 amps

<b>Answer: C</b>
------------------

---

For More Information – **Visit link below:**  
**<http://www.certsgrade.com/>**

## PRODUCT FEATURES

-  **100% Money Back Guarantee**
-  **90 Days Free updates**
-  **Special Discounts on Bulk Orders**
-  **Guaranteed Success**
-  **50,000 Satisfied Customers**
-  **100% Secure Shopping**
-  **Privacy Policy**
-  **Refund Policy**

Discount Coupon Code: **CERTSGRADE10**

