

## *Juniper*

*JN0-412*

*Cloud, Specialist (JNCIS-Cloud)*

**Questions And Answers PDF Format:**

**For More Information – Visit link below:**

**<https://www.certsgrade.com/>**

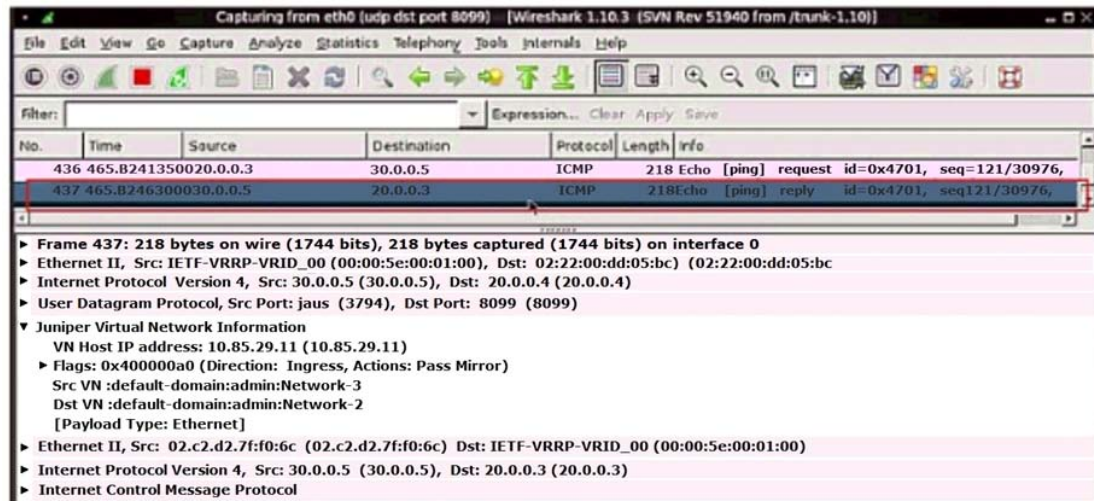
*Version = Product*



# Latest Version: 6.0

## Question: 1

Click the Exhibit button.



The exhibit displays a Contrail analyzer virtual machine's console. Which two statements are true in this scenario? (Choose two.)

- A. The ping traffic is initiated by a virtual machine with an IP address of 20.0.0.3.
- B. The ping traffic is initiated by a virtual machine with an IP address of 20.0.0.4.
- C. The Contrail analyzer virtual machine's IP address is 10.85.29.11.
- D. The Contrail analyzer virtual machine's IP address is 20.0.0.4.

**Answer: AC**

## Question: 2

You decide to create only host routes for each of your virtual networks in a project. Each virtual network is sent its correct host prefix. When troubleshooting inter-VN connectivity, using the ping command, the response times out between two virtual networks even though your policies allow for it.

What is the problem in this scenario?

- A. The VMs do not have interfaces.
- B. Using host routes prevents the default route from being sent.
- C. Your VMs have incorrect DNS settings.
- D. The IPAM settings are incorrect.

**Answer: C**

---

### Question: 3

Which command displays routes in vRouter VRF?

- A. rt
- B. show route
- C. show route table vrf-name
- D. route print

**Answer: A**

Reference:

[https://www.juniper.net/documentation/en\\_US/contrail2.21/topics/task/configuration/vrouter-cli-utilities-vnc.html](https://www.juniper.net/documentation/en_US/contrail2.21/topics/task/configuration/vrouter-cli-utilities-vnc.html)

### Question: 4

What are two networking components of OpenStack? (Choose two.)

- A. Neutron
- B. Nova
- C. Ironic
- D. Barbican

**Answer: AB**

Reference: <https://docs.openstack.org/newton/networking-guide/intro.html>

### Question: 5

What are two characteristics of containers used in Contrail? (Choose two.)

- A. Each container has the configuration for all applications running in that container.
- B. Each pod can contain only one container.
- C. Each container has the configuration for all applications running in all containers.
- D. Each pod can contain several containers.

**Answer: AB**

Reference: [https://www.juniper.net/documentation/en\\_US/contrail19/topics/concept/summary-of-container-design.html](https://www.juniper.net/documentation/en_US/contrail19/topics/concept/summary-of-container-design.html)

---

For More Information – **Visit link below:**  
**<http://www.certsgrade.com/>**

## PRODUCT FEATURES

-  **100% Money Back Guarantee**
-  **90 Days Free updates**
-  **Special Discounts on Bulk Orders**
-  **Guaranteed Success**
-  **50,000 Satisfied Customers**
-  **100% Secure Shopping**
-  **Privacy Policy**
-  **Refund Policy**

Discount Coupon Code: **CERTSGRADE10**

